

FINCASTLE ISLAND

@ OLD FORT BAY

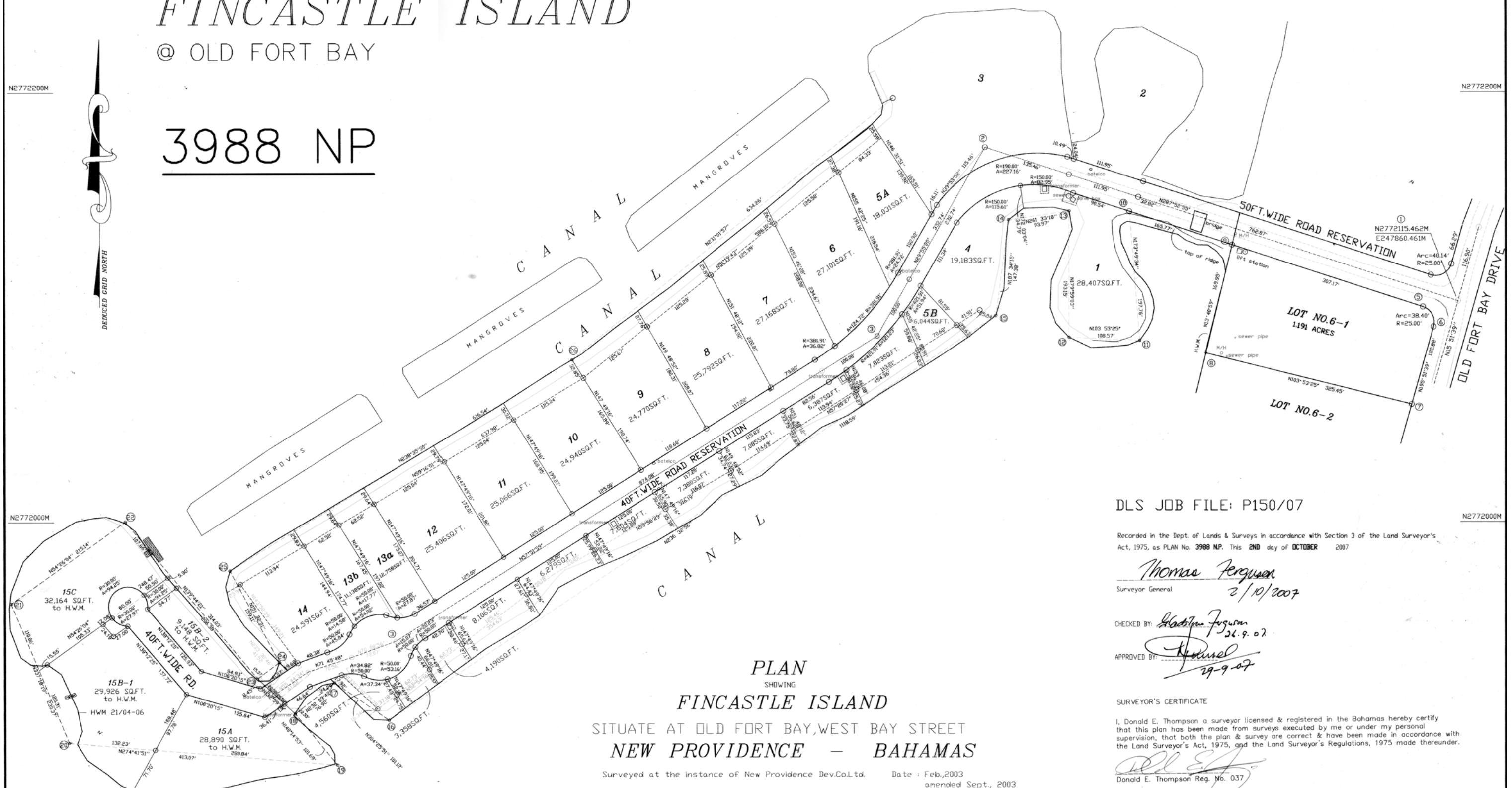
3988 NP

N277200M

N277200M

N277200M

N277200M



PLAN

SHOWING

FINCASTLE ISLAND

SITUATE AT OLD FORT BAY, WEST BAY STREET
NEW PROVIDENCE - BAHAMAS

Surveyed at the instance of New Providence Dev.Co.Ltd. Date: Feb., 2003

NOTES
GRID CONNECTION: DLS PLAN NO.3756NP
Reference: plan by Caribbean Surveys Limited
Survey monument set..... ○
Survey monument found..... ⊙

LOT AREAS ARE TO EDGE OF CANAL
TRANSFORMER PAD
ROAD
TRANSFORMER
3FT. WIDE EASEMENT

THIS PLAN SUPERSEDES DLS PLAN DN.3966NP



SCALE : 1 INCH = 100 FEET

- amended Sept., 2003
- amended July, 2003
- amended June, 2005
- amended March, 2006
- amended APRIL, 2006
- amended MAY, 2006
- amended 19th Sept., 2006
- amended 07-05-07
- amended 07-08-07
- amended 11-09-07

DLS JOB FILE: P150/07

Recorded in the Dept. of Lands & Surveys in accordance with Section 3 of the Land Surveyor's Act, 1975, as PLAN No. 3988 NP. This 2ND day of OCTOBER 2007

Thomas Ferguson
Surveyor General 2/10/2007

CHECKED BY: *Thomas Ferguson* 26.9.07

APPROVED BY: *Thomas Ferguson* 29-9-07

SURVEYOR'S CERTIFICATE

I, Donald E. Thompson a surveyor licensed & registered in the Bahamas hereby certify that this plan has been made from surveys executed by me or under my personal supervision, that both the plan & survey are correct & have been made in accordance with the Land Surveyor's Act, 1975, and the Land Surveyor's Regulations, 1975 made thereunder.

Donald E. Thompson
Donald E. Thompson Reg. No. 037

DONALD E. THOMPSON & ASSOCIATES

Land Surveyors—Land Planners—Engineers
P.O. BOX N-9771 Tel. (242) 323-3014 Nassau, Bahamas

Survey by : D E. THOMPSON

Plan by : Kendall Richardson

N2771800M

N2771800M